



**DVD neXt COPY MobleX  
User's Guide  
September 2010**

**Table of Contents**

*1.0 Introduction*.....3

    1.1 Helpful Tips.....4

    1.2 Limitations .....4

    1.3 Support.....4

*2.0 Installation & Activation* .....5

    2.1 Download & Installation.....5

    2.2 Activation.....13

*3.0 Third Party Plugins* .....16

*4.0 MobleX*.....19

*5.0 Transferring License Code to another computer* .....25

*6.0 Terms* .....28

## 1.0 Introduction

DVD neXt COPY MobleX provides you the ability to copy DVD movies to the following mobile devices:

iPod Classic/Nano  
iPhone/iPod Touch  
iPad  
Apple TV  
DVD to HD  
PSP/PSPgo  
Playstation 3  
Zune  
Microsoft Xbox  
Creative Zen Wide  
Creative Zen  
Creative X-Fi  
Nintendo Wii  
Nintendo DS  
Flash Video  
Walkman  
Sansa  
Blackberry Storm  
Nokia Mobile  
Nexus/Android  
Netbook

### **NEW DVD neXt COPY MobleX features:**

- Copy all your DVD movies to your mobile device
- Choose individual setting for your mobile copy.
- Contains neXt Tech™, for copying your latest DVD movies
- Supports both NTSC and PAL DVD movies
- Technical Support

### **DVD neXt COPY MobleX Minimum System Requirements**

- Win 2000, XP
- Pentium III® 500 MHz or equivalent
- 256 MB RAM
- 10 GB of free hard drive space.
- A DVD Writer .

### **DVD neXt COPY MobleX Recommended System Requirements**

- Win XP, X64, VISTA, Windows 7
- Pentium 4® 1.4GHz or equivalent
- 512 MB RAM
- 15 GB of free hard drive space.
- A DVD writer..

## **1.1 Helpful Tips**

Turn off all active programs including anti-virus before you begin.

## **1.2 Limitations**

Some programs may affect the burning cycle. You should limit the number of additional external devices connected during the burning process.

## **1.3 Support**

Regardless of where you purchased your software, DVD neXt COPY MobleX offers FREE technical support via one of the following:

### **DVD neXt COPY MobleX Help and Support**

If you are having problems using DVD neXt COPY MobleX, you will most likely be able to find the answers to your problems right on our website. Please use our online support system. [Click here](#)

If you are unable to find your answer on our support page, please submit a support ticket to our tech support team. All tickets submitted will be answered within 24 hours of the posting time.

## 2.0 Installation & Activation

### 2.1 Download & Installation

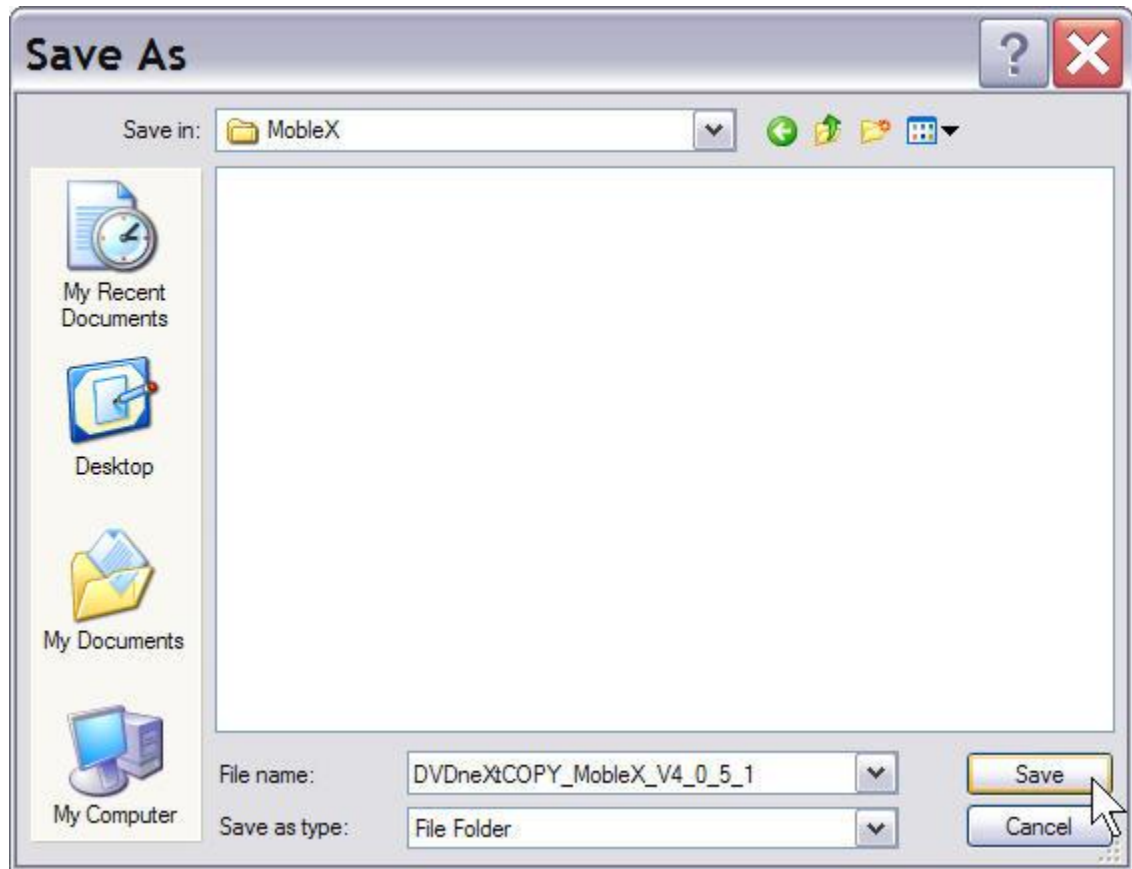
**Step 1:** Go to our website and download the latest version:

<http://www.DVD neXt COPY.com/updates.aspx>

Then click on Save. Make sure you download the latest version of the product that you purchased, or your License Code will not work.



**Step 2:** Save the file to your hard drive.



**Step 3:** Make sure the “Close this dialog box” is **UN**checked so it will stay open after the download is complete.



**Step 4:** After saving the file you will see this window. Click on **Run**.

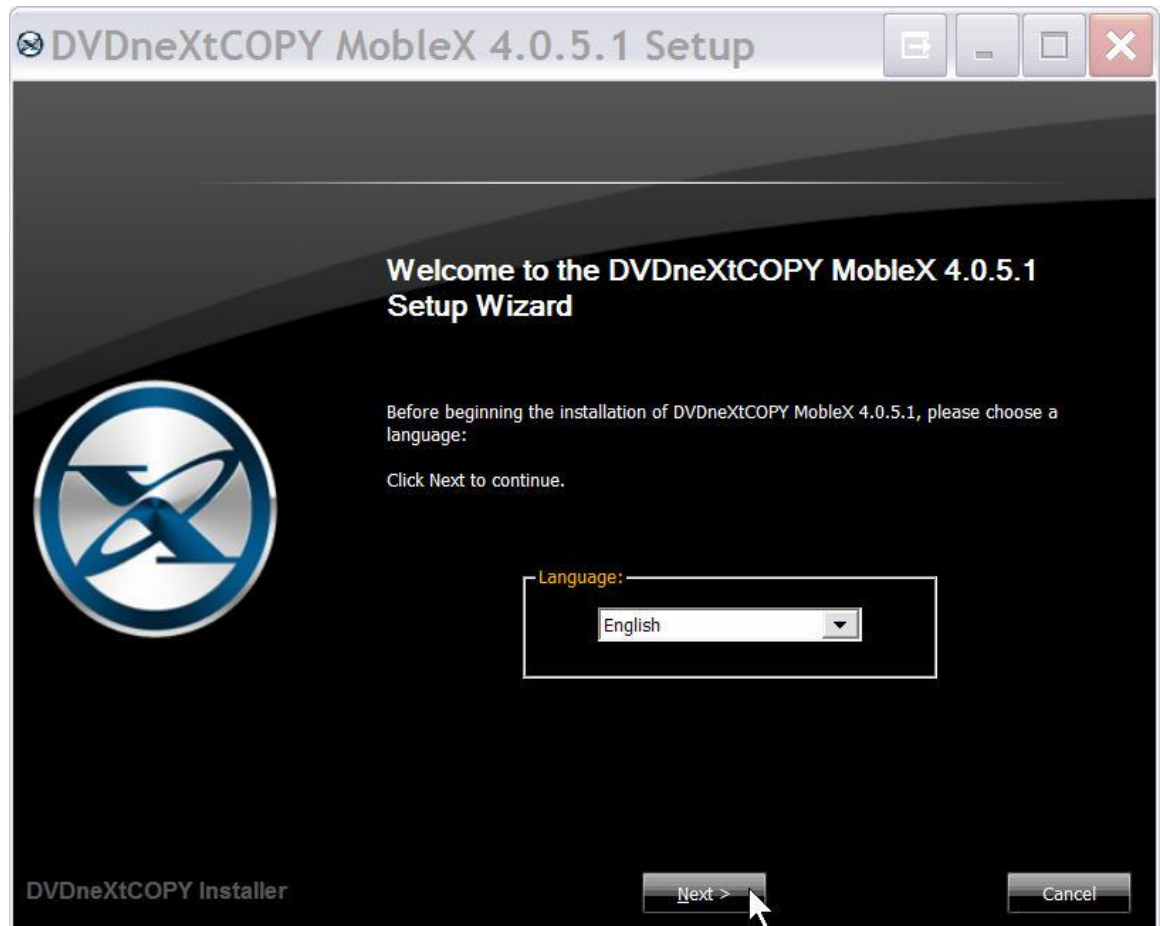


**Step 5:** Click on **Run** again.

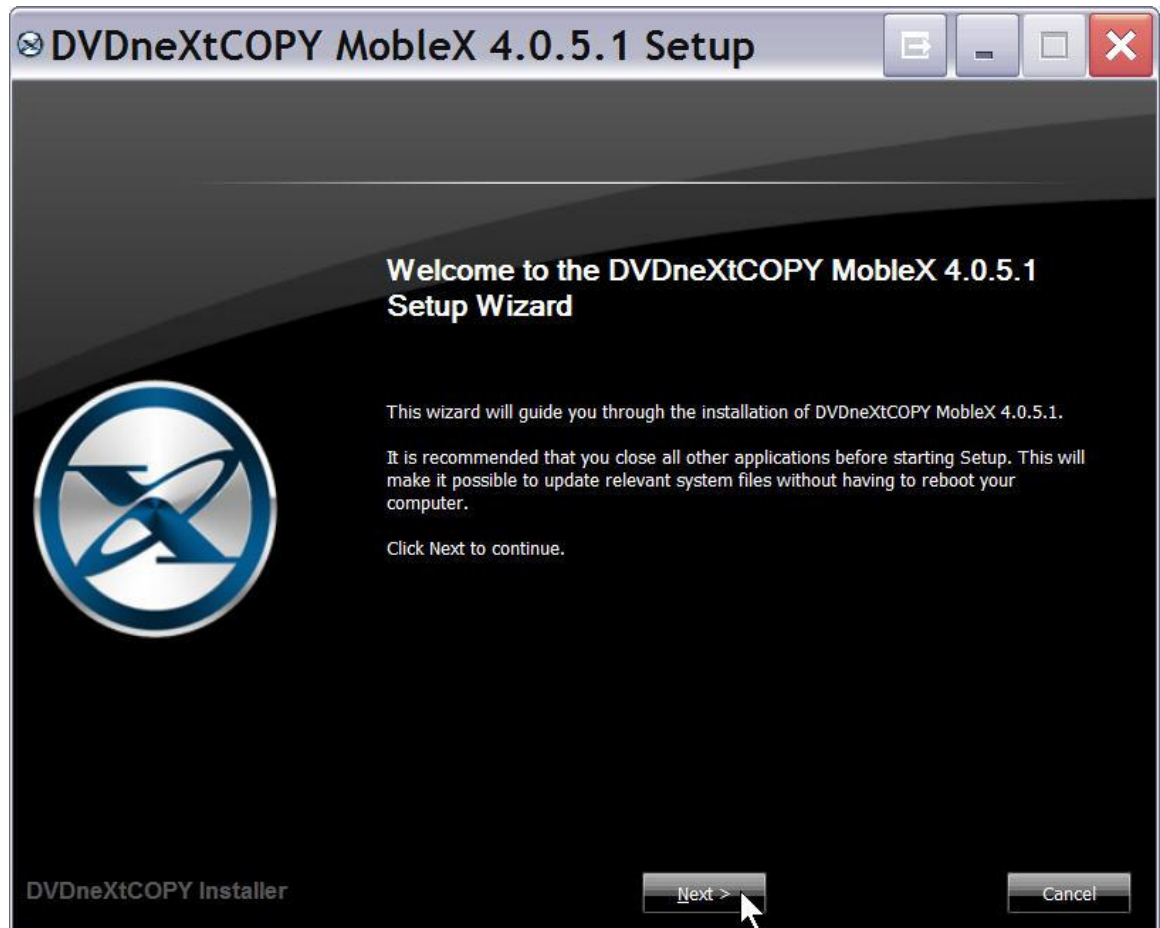




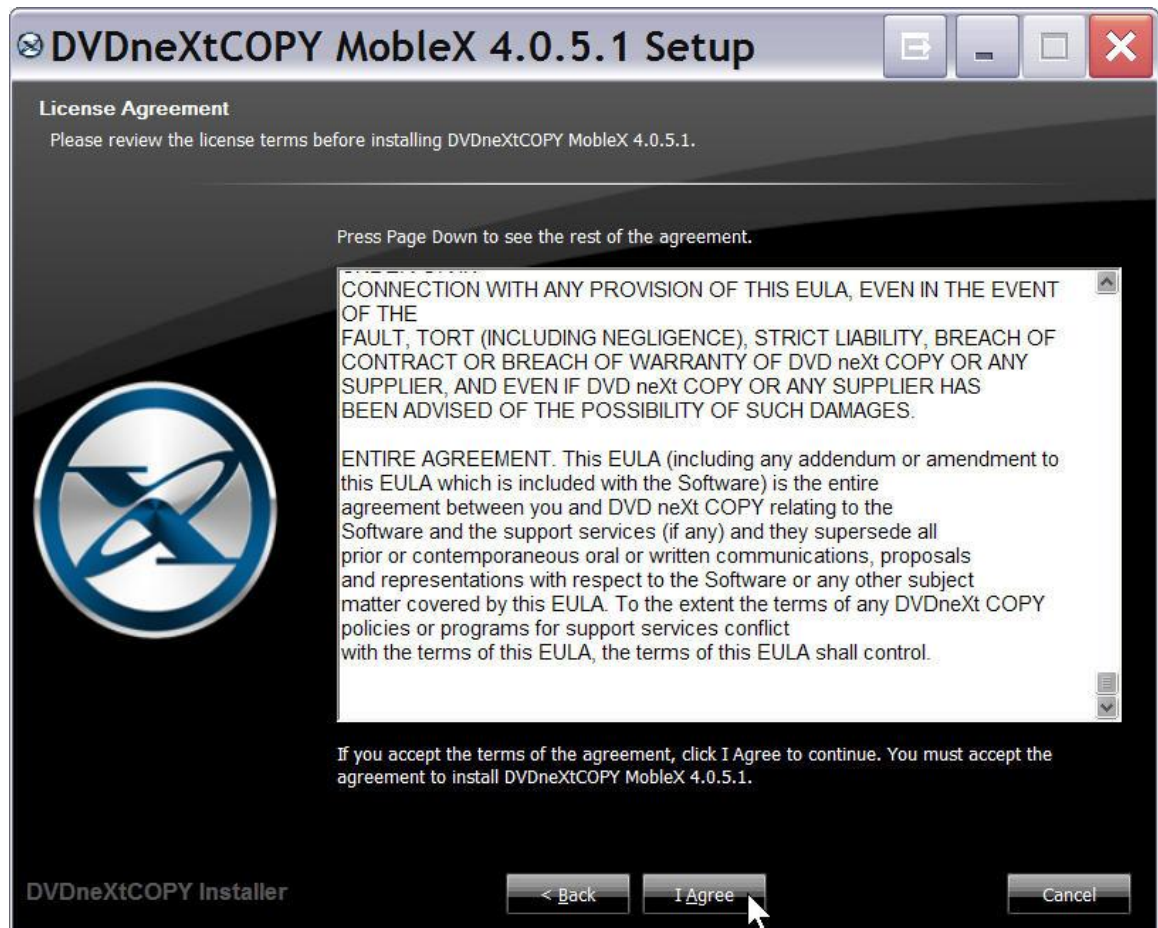
**Step 6:** The setup Wizard will open. Choose a language and Click **Next**.



**Step 7:** Click **Next** again.



**Step 8:** Read the License Agreement and, if you agree, Click on **I Agree**. The installation process will begin. Please note installation is limited to **two of your own computers** for each DVD neXt COPY MobleX License Code purchased.



**Step 9:** After the software installs, click Finish. The installation is complete.

The first time you run DVD neXt COPY MobleX you will be required to activate your software while your computer is connected to the internet.

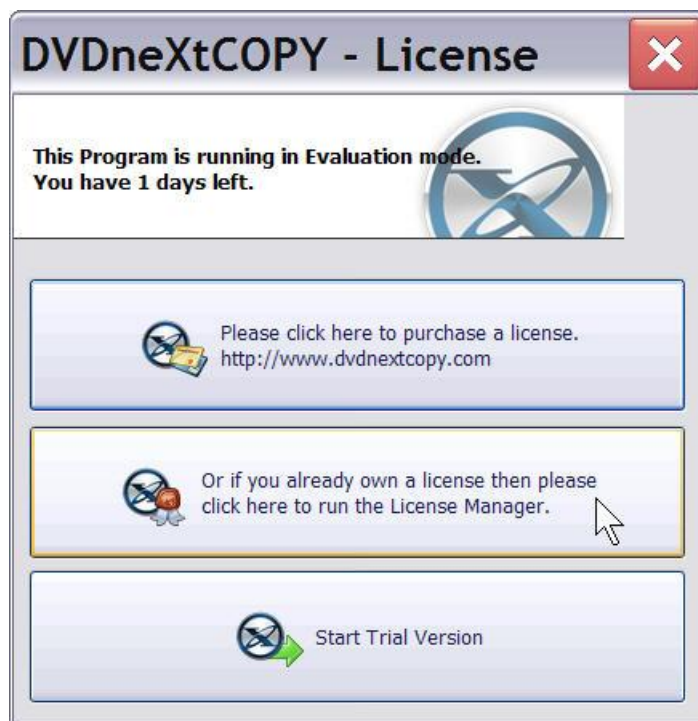


## 2.2 Activation

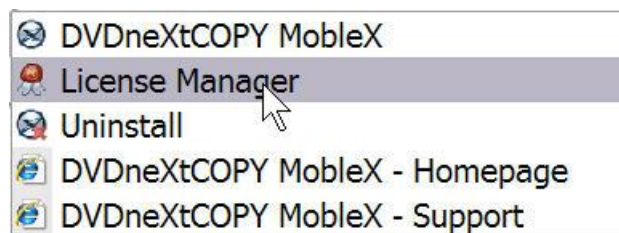
**Step 1: Make sure your computer is connected to the internet.** The first time you run the software, you should get an Evaluation mode popup.

Click on the middle link in the popup to open the License Manager. It may take up to 30 seconds for the license manager to open, while it checks with our activation server.

(**Note:** If you were already running the trial you can click on the top link to go to the website and purchase the software).



If you do not get an Evaluation mode popup, **Run the MobleX License Manager** through the **Start menu**.



**Step 2:** Enter your License Code you received with your purchase email. You may copy and paste your License Code into the field. If you TYPE in your License Code, use only **the number zero (0)** and **not the letter O**. Click on **Activate**.



*Note: If you have lost or misplaced your License Code, please go to our online support system and submit a support ticket with your purchase information. [Click here](#)*

**Step 3:** You will receive a popup telling you that your software successfully activated. Click on **OK**.





### 3.0 Third Party Plugins

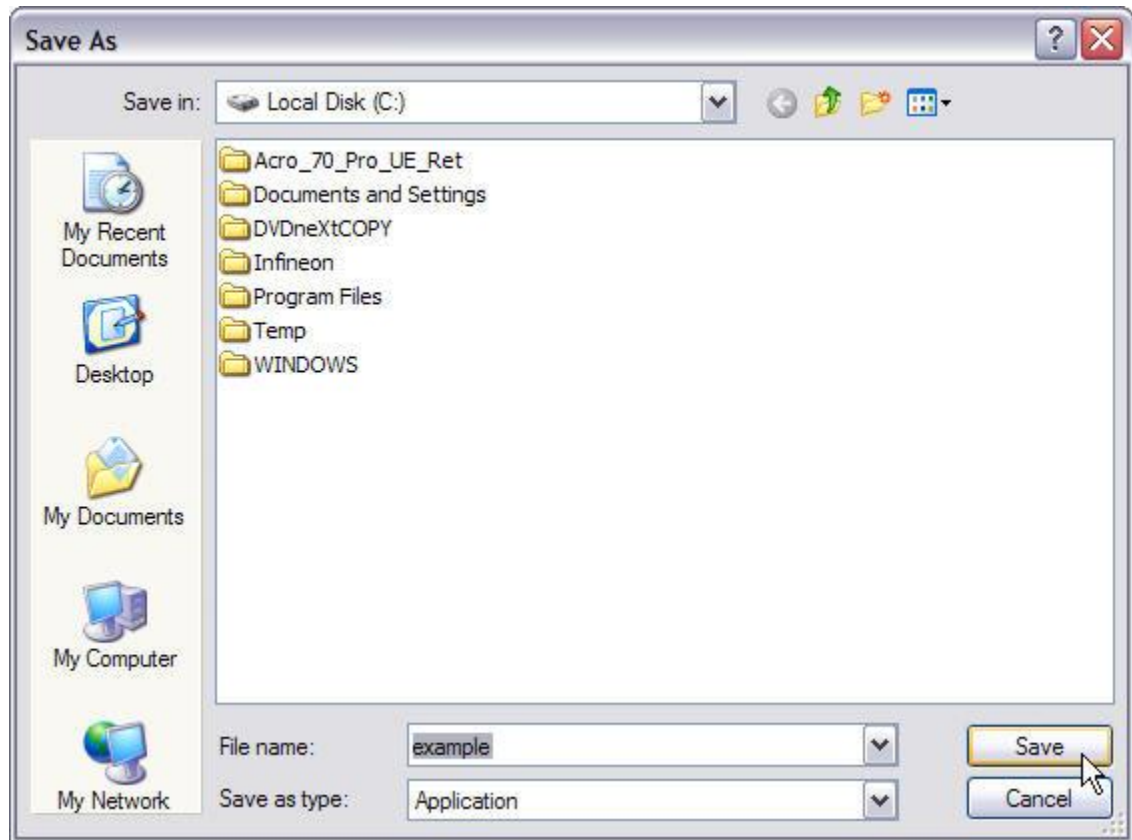
All third party plugins should be downloaded and SAVED to your hard drive.

**Note:** Make sure DVD neXt COPY MobleX is NOT running when you install any third party plugins or they may not install properly.

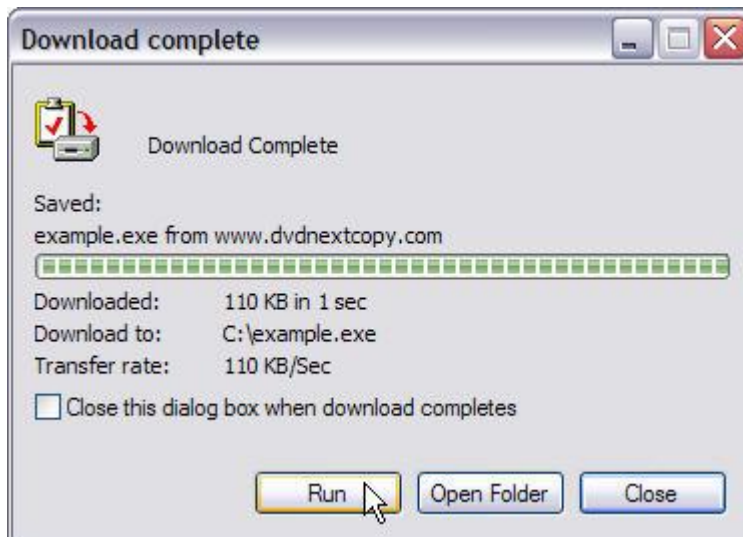
**Step 1:** Click on **Save**.





**Step 2: Save to your hard drive**

**Step 3:** You can then click on **Run** to install the third party plugins.



**Step 4:** Click on **Run** again and install the plugin.

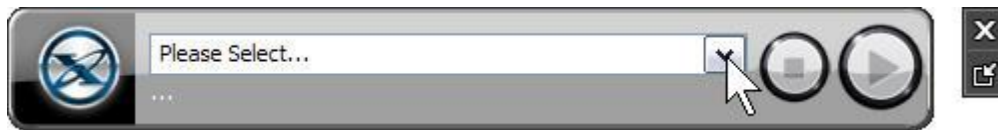


Note: If this is your first time running any of our DVD copy products, you may receive an encryption warning popup. Just follow the instructions in the popup on how to download the third party plugin. It only takes a few seconds and it is free.

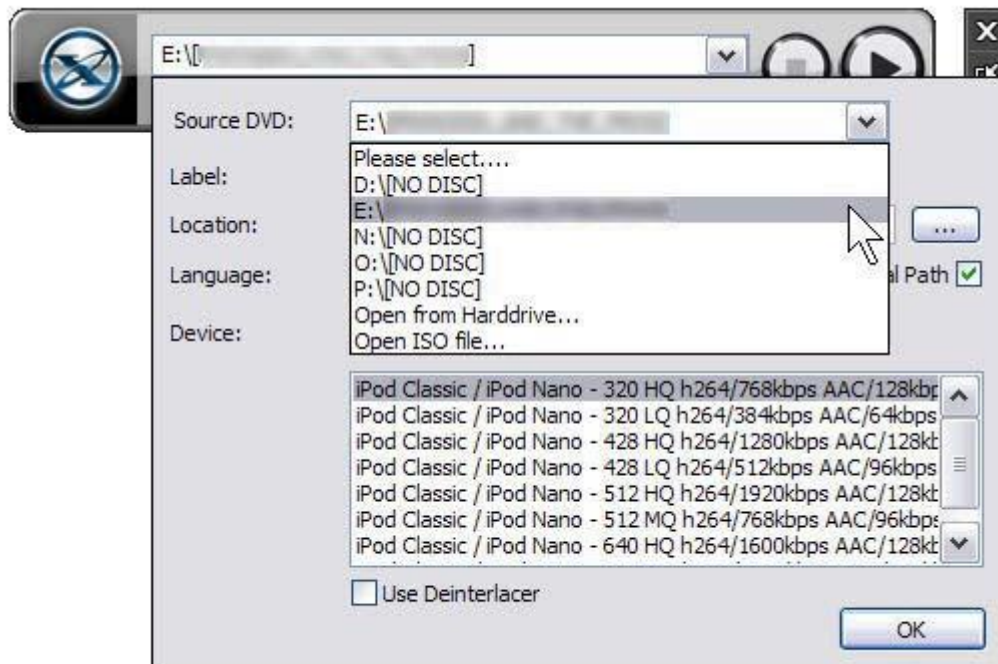
## 4.0 MobleX

**Step1:** Run MobleX by clicking on either the desktop icon or DVDneXtCOPY MobleX in the Start menu. You will be prompted to select your target drive with the DVD movie, or an ISO file or movie on your hard drive.

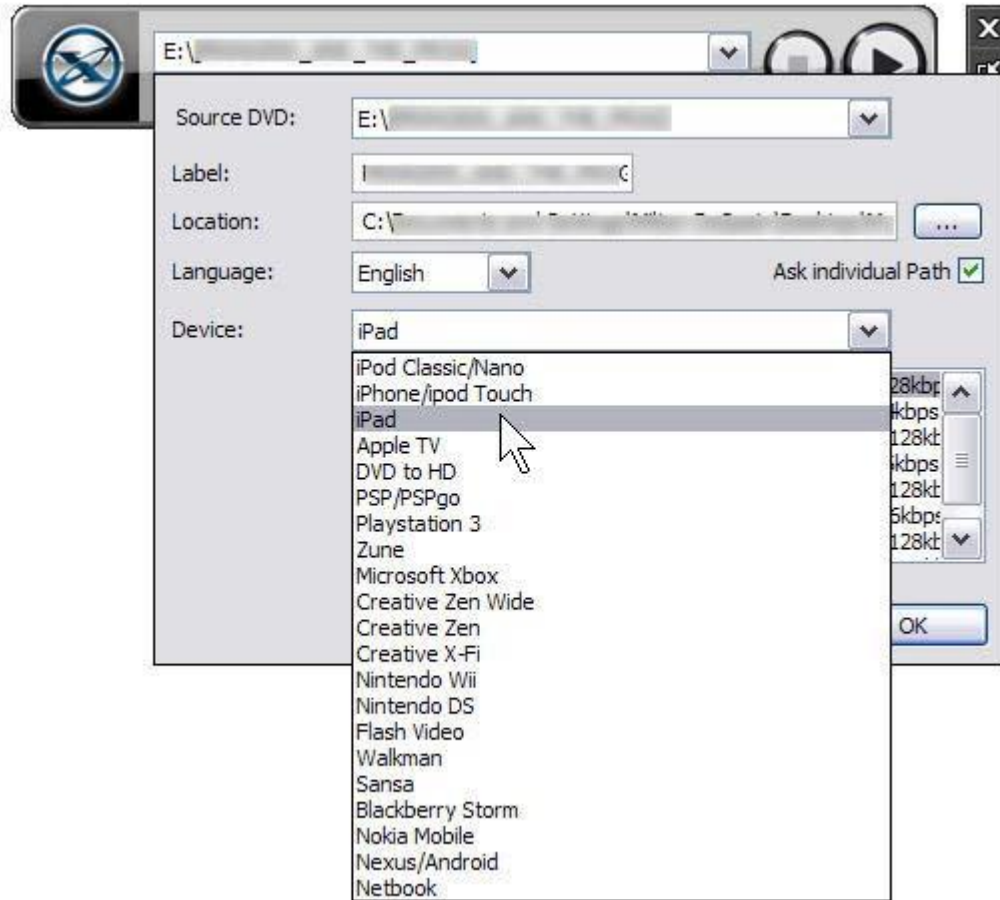
**Note:** If the software identifies the drive with the DVD movie, it will automatically start analyzing the movie.



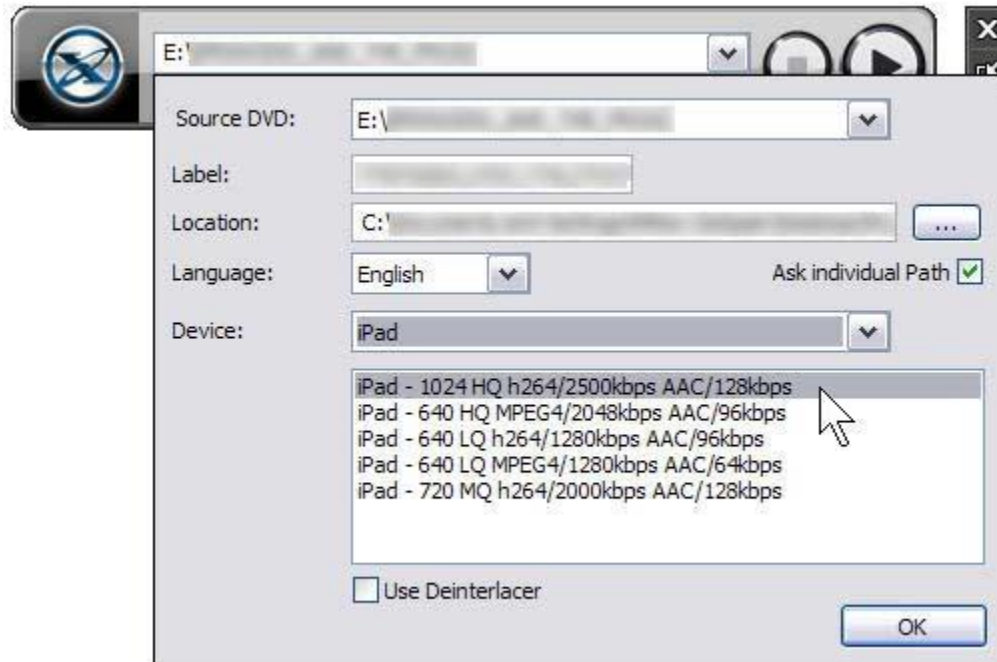
**Step 2:** Click on the source pull down with the DVD movie and select your target location.



**Step 3:** Select the audio Language, click on the Device pull down and select mobile device you are copying the DVD movie to.



**Step 4:** Click on your desired settings for the size and quality of the copy. The best settings may vary, depending on your system. You may want to try the different settings to see what works best on your system for your particular mobile device. Click OK.

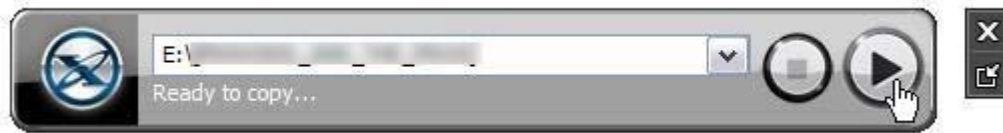


**Note:** Some movies are interlaced and show white lines across the video when copied. If the copy has white lines, put a check mark in the Use Deinterlacer box and copy it again.

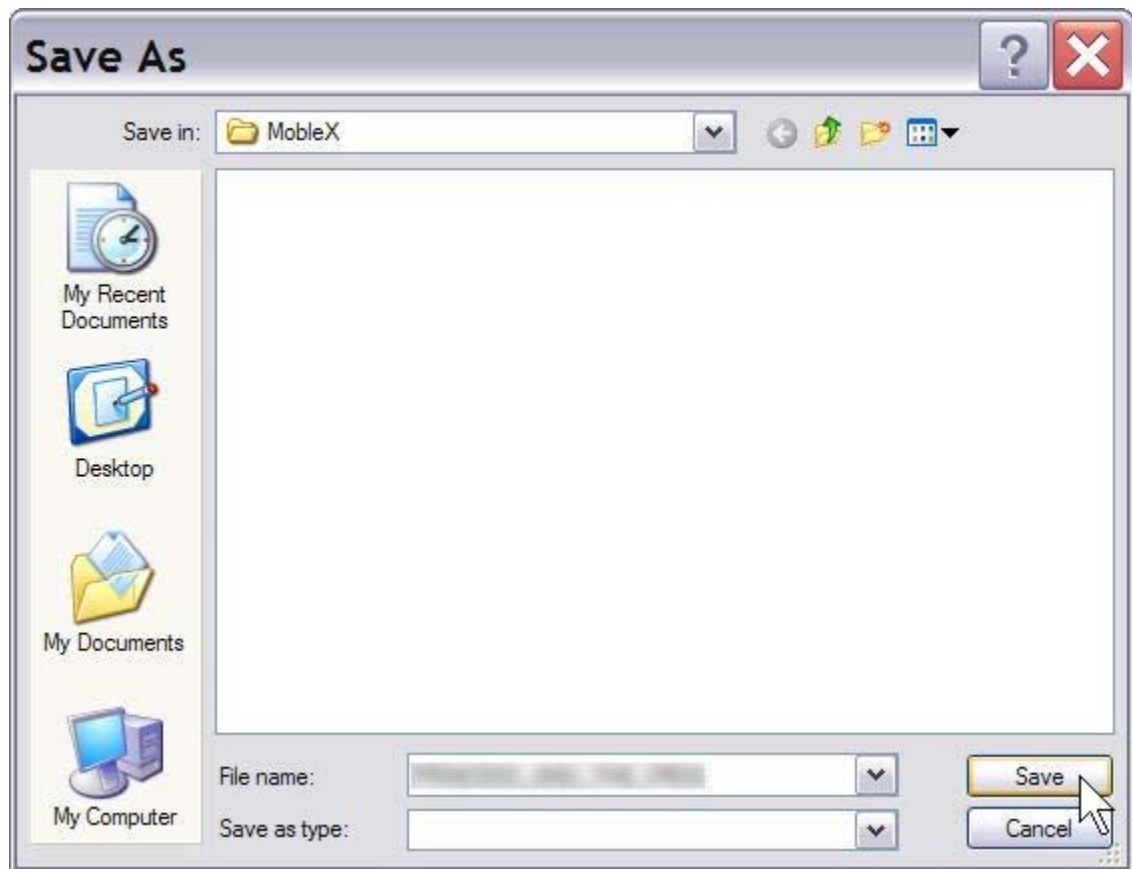
After clicking OK, the software will analyze the DVD movie using the settings you just selected.



**Step 5:** When you see Ready to Copy, click the Start Button.



**Step 6:** A Save As window will open and you can browse to the folder on your hard drive where you want to save the DVD movie.



**Step 7:** The software will begin Copying and Transcoding the DVD movie to your hard drive.



**Note:** MobleX copies the **movie title** to your hard drive **FIRST**, during the Copying and Transcoding cycle. If you aborted the first time, the movie title and a portion of the movie may still be on your hard drive, even if the full movie is not. If this is the second time you have tried to copy this same movie title, you will get this warning:



The software is telling you there is already the exact same movie title (and part or all, of the movie) on your hard drive. If you click yes, it will delete the existing file and save the new movie in its place. If you click No, it will take you back to **Step 5** and you can rename the movie, so it will not delete the existing file.

When the Copy process is complete, you will receive this message.



MobleX was designed under the Windows Gadget, always on top, concept. Because of the small GUI, you can move it to the side of your work area and monitor the copying and burning process while you continue to work on other projects. You also have the option to minimize MobleX to your tray.



Then you can double click on the DVD neXt COPY icon in the tray to Show MobleX again.





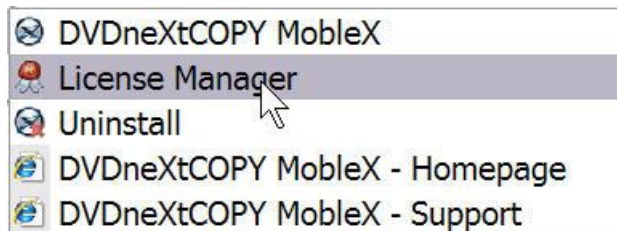
## ***5.0 Transferring License Code to another computer***

The DVD neXt COPY MobleX End User License Agreement (EULA) allows you to install the software on **two** of your own computers, at the same time.

Due to popular demand, our new activation system allows you to uninstall and reinstall the software as many times as you like on the same computer, without having to ask for more activations from our support department.

If you wish to transfer your license code to another computer, you must first return the license code to our activation server and then download and activate the software on the new computer, by entering your license code on that computer.

**Step 1: Make sure your computer is online. Run the MobleX License Manager** through the **Start menu**. It may take up to 30 seconds for the license manager to open, while it checks with our activation server.



**Step 2: Write down your License Code** so you will have it to activate on the new computer. (Make sure you **include the dashes**). Click the **De-Activate** icon at the top of the License Manager and then click on the **De-Activate** button.



**Step 3:** You will get a **License Successfully Returned!** popup. Click on **OK**.

To reinstall on your new computer, please follow the procedures as outlined in, **Chapter 2 Installation & Activation**.



## 6.0 Terms

### A

a-characters      An ISO-9660 character set. A B C D E F G  
H I J K L M N O P Q R S T U V W X Y Z 0 1  
2 3 4 5 6 7 8 9 \_SP ! " % & ' ( ) \* + , - . : ; < =  
> ?

administrator rights      An administrator is who manages the computer system.

Anti-piracy      Being against unauthorized use of patented or copyrighted work.

Application Name      The name of the application necessary for accessing data from the CD.

ASCII      American Standard for Information Interchange – a binary code for text communication and printer controls. It is the built in character code in all computers.

ASPI      Advanced SCSI Programmer's Interface. An expanded standard low-level interface used for accessing SCSI devices

Audio      There are three types of audio formats: Dolby AC3, PCM, MPEG-1 Layer II and MPEG-2

### B

Bit      A contraction of a binary digit. The binary system number is based on powers of two. A binary digit, or a bit, is either a one or a zero. Since DVDs are digital storage media format, all information is recorded as digital data, or as bits (ones or zeros).

Block      Also known as a sector or a logical block and is identified by a logical block number (LBN). A block is the smallest unit of information on a CD-ROM that can be addressed.

Blu-ray disc      (also known as Blu-ray or BD) is an optical

disc storage media format. Its main uses are high-definition video and data storage. The disc has the same physical dimensions as a standard DVD or CD.

The name Blu-ray Disc is derived from the blue laser (violet colored) used to read and write this type of disc. Because of its shorter wavelength (405 nm), substantially more data can be stored on a Blu-ray Disc than on the DVD format, which uses a red (650 nm) laser. A dual layer Blu-ray Disc can store 50 GB, almost six times the capacity of a double-dual layer DVD (or more than 10 times if single-layer).

Buffer	A memory holding area used to temporarily store data.
Burn	The process of writing information to a writable CD or DVD.
Bytes	Eight bits of digital data.
<b>C</b>	
Cache	A memory buffering method used to obtain data faster than from a CD or other media.
Caddy	The tray or carrier where the CD is placed for reading or writing.
Caliber	
CD	Compact Disc
CD-DA	Compact Disc – Digital Audio, developed by both Philips and Sony corporations. These are playable on any audio CD player or computer CD-ROM drive.
CD-R	Compact Disc – Recordable, These are read-only on a standard CD-ROM drive. Images, text data or sound can be recorded.
CD-ROM	Compact Disc – Read Only Memory, Media which can contain data, audio or voice.
CD-ROM Drive	A hardware device which allows the CD

	media to be read, played or recorded.
CD-RW	Compact Disc- Read/Write, A rewriteable CD. These can be erased and re-recorded.
CD-Text	Text information stored on an audio CD in either the lead-in or in audio tracks.
Compression	A method to reduce the storage size requirements of digital information by removing redundant data. Video compression allows the hundreds of gigabytes of data contained in a full length movie to be reduced so that it will fit on a DVD.
Content	The video, audio and graphics that are to be added to a DVD.
Copyright Filename	The name of a file located in the root directory containing a copyright notice.
C2	The minimum security level defined by the National Computer Security Center (NCSC).
<b>D</b>	
DAT	Digital Audio Tape
Data Preparer's Name	The name of the author of the Cd's contents.
Details Pane	The details pane displays files associated with currently selected session and directory within that session.
Device	Any electronic machine or component from a transistor to a disc drive. Ther term "device" always refers to hardware.
Disc	An alternate spelling for disc. Disc is

	usually used with read-only media, such as CDs and CD-ROMs.
Disc at Once	A single process method of recording data on a CD. The Lead-in is converted first, then the data sector, followed by the Lead-out.
Disc Image	A file that contains the image of a DVD. If you elect to create a Disc Image, you can then make copies of that DVD simply by writing that Disc Image to a writeable CD or DVD.
Directory	The term directory refers to the address of a file or group of files on your hard drive or removable media.
Direct X	A set of multi-media programming interfaces from Microsoft for Windows.
Disc	A direct access storage device such as floppy disc, hard disc, magnetic disc, optical disc, CD-ROM and DVD.
Dolby AC3	Dolby Audio Coding 3 – the audio coding technology used in Dolby digital.
Dolby Digital	A digital audio encoding system from Dolby used in movie & home theatres.
DV	Digital Video – video captured to a computer from a digital camcorder.
DVD	The term DVD officially doesn't stand for anything, although it is often said to stand for Digital Versatile Disc or Digital Video Disc. DVDs are 3 or 6 inch discs capable of storing 2.2, 4.7, 8.5 9.4 or 17 gigabytes of data.
DVD-RAM	Alternative competing format of record-once type discs with 2.4 GB storage capacity per side.

DVD-ROM	DVD-Rom does not contain Video_TS and Audio_TS directories and therefore cannot read by a consumer DVD player. DVD-ROMs typically are used to store data much in a way a CD_ROM is used today.
DVD-R/DVD+RW	Alternative competing format of record-once type (DVD+R) or re-recordable type (DVD+RW) discs with 4.7 GB storage capacity per side.
<b>E</b> Episodic Discs	These are TV Series discs that have multiple shows that have been produced as a single DVD.
EULA	End User License Agreement
<b>F</b> File System	A data structure that converts the physical image of a disc into a logical structure of files and directories.
Folder	The term directory refers to the address of a file of group of files on your hard drive or removable media.
Folder Pane	The folder pane shows the tracks, sessions and folders on the CD or DVD.
<b>G</b> gigabytes	One million bytes
GIF	Graphics Interchange Format – a popular bitmapped graphics file format developed by CompuServe.
<b>H</b> Hard drive	The primary computer storage device, which spins, reads and writes one or more fixed disc platters. (hard drive & hard disc are used synonymously)
Hard errors	Errors that can not be automatically recovered from device in a single read attempt.
HDTV	High Definition Television – A high-



	resolution digital television combined with Dolby Digital surround sound (AC-3).
Hexadecimal	16. The base 16 numbering system is used as shorthand for representing binary numbers. Each half byte (4bits) is assigned a hex digit.
HFS	Hierarchal File System. The file system used by the Macintosh operating system to arrange data on hard discs and floppy discs. This system can also be used for CD-ROMs.
HFS+	Allows longer file names (256) characters and supports Unicode.
<b>I</b>	
Image	A single file containing all edited data on a CD.
IFO	( <b>IFO</b> stands for <b>InFO</b> rmation).
.INI	A file containing configuration information for Windows. Some applications have their own .ini files which hold program information.
.ISO	A CD image format similar to a BIN/CUE image file set, but the one single .ISO file contains both the data and the CD layout information.
ISRC	International Standard Recording Code
ISO-9960	An international logical file format for CD-ROMs originally developed by the High Sierra Group. All data on a CD is addressed using logical block numbers
<b>J</b>	
Joliet	A logical file format created by Microsoft Corporation which conforms to ISO-9960 format. This format allows long file names (up to 64 characters) and uses the Unicode

	international character set.
JPEG	Joint Photographic Experts Group – a standard for compressing still images.
<b>K</b>	
Kilobytes	1 thousand bytes or 1,024 bytes in technical specs.
<b>L</b>	
LBN	Logical Block Number. <i>See Block</i>
Lead-in	The first part of a CD-R recording session. The Table of Contents is converted into the lead-in when the session is closed.
Lead-out	The ending area for each session where the index to the next session is stored. Writing the lead-out closes the session.
License Number	A number provided to a specific copy of the software used to identify the end user who purchased the product.
<b>M</b>	
MCN	Media Catalog number
Media	Video and audio used in the creation of a DVD
Mobile Device	Reference to iPod, PSP or Zune mobile device used to view DVD movies while on the move.
Mode 1	The original “ordering” of control information in the sector header. Most basic form read by all CD devices.
Mode 2	(XA) “extended architecture” that allows definitions of sub-types within the data by using an additional 8 bytes in the sector header. This was moved from the back end of the sector to the front to allow for this.

MPEG	A video compression system developed by the Motion Picture Experts Group. There are currently two types in use: MPEG-1 and MPEG-2.
MPEG-1	Achieves approximately $\frac{1}{4}$ the resolution of broadcast TV and is slow for processing high quality moving images.
MPEG-2	The super high quality video technique used for DBS (satellite TV), DHTV and DVD.
MPEG-4	A transport-agnostic multi-media representation technology developed as an expansion on the MPEG-2 standard.
MSF	Minute Second Frame addressing, used with both data and audio tracks. This is an alternate addressing form for CD.
<b>N</b>	
<b>O</b>	
Optical Media	A direct access media converted and read by light.
<b>P</b>	
Packet Writing	A technique of writing to a CD-R or CD-RW disc which allows small increments of data to be added to the disc. This is used by nearly all "drag-and-drop" type CD burning software. See <i>UDF</i> .
PCM	Pulse Code Modulation- an uncompressed, digitally codes representation of an analog signal.
Preferences	Options in a program that can be changed by the user. They usually control the user interface letting the user customize the way they view data.
PGC	(Program Chain or sequential presentation of the movie).
Publisher's Name	Identifies the name of the CD's publisher

**Q**

## Quick Erased disc

CD/RW discs can be erased “quickly” taking less than 5 minutes. However, the original information is present on the disc but it cannot be read by consumer drives. The information on the disc can only be recovered using special hardware.

**R**

## Region coding

A standard based upon country that the technology is available in.

**S**

## SCSI

Small Computer System Interface, An interface allowing you to connect media devices to your computer.

## Sector

The smallest unit of information on a CD that can be addressed. Also referred to as a block. A sector may contain a header, synchronization bits and user data. Different types of CDs contain different sector sizes. A data CD-ROM contains a sector size of 2048 bytes of data.

## Settings

User defined choices that can be “set” as their default.

## Soft errors

Errors that the software can normally recover from.

## Sub-q Data

A hex hump containing current position data for the track, UPC code for the track, current minutes and seconds time into the track and ISRC.

## SVCD

Super Video Compact Disc – a movie on an SVCD is the same quality as a VHS tape.

## System Name

The name of the operating system running the application.

**T**

TDF	Title Definition Format
Text Editor	Software used to create and edit files that contain only text.
Third Party Plugins	Any 3 <sup>rd</sup> party plugin applications, such as a Graphical User Interface (GUI), that are not part of the DVD neXt COPY MobleX program.
Thumbnail	A small, scaled-down version of any given image or video. Although typically much smaller than the original image, thumbnails give you a quick, overall preview of an entire image.
Titleset	A titleset is the highest position in the hierarchy on a video DVD. Every DVD has at least one, and most will contain multiple chapters and/or titles. All files associated with a given titleset have the prefix VTS_ and then the number of the titleset itself.
TOC	Table of Contents, shows the contents of every recorded session. The contents consist of the number of tracks, the starting location for each track, and the total size of the data area. The lead-in contains TOC.
Tool Bar	A small window which contains buttons or icons that are shortcuts to menu commands. Toolbars list available commands.
Track	On a data CD-ROM, one track may contain data, files and folders. On an audio CD, a single track contains one piece of music. Each track is separated by a gap.

**U**

UDF	Universal Disc Format, nearly all drag-and-drop CD burning software uses this format.
-----	---

UPC Unique Product Code, A unique bar code format for a CD.

## **V**

VCD Video Compact Disc – a CD that contains moving pictures and sound.

VHS Video Home System – a half inch analog videocassette recorder (VCR)

VOB Video Object File – the next step in video files past analog source

Volume Descriptor This resides at the beginning of the CD where the structure of the file system is located. A volume descriptor may contain: system name, volume name, volume set name, publisher's name, data preparer's name, application name, copyright filename.

Volume Name The name of the CD displayed when it is mounted.

Volume Set Name The name of the set of volumes.

## **W**

.WAV Stores samples “in the raw” where no pre-processing is required other than formatting of data.

## **X**

XA *See Mode 2*

## **Y**

## **Z**